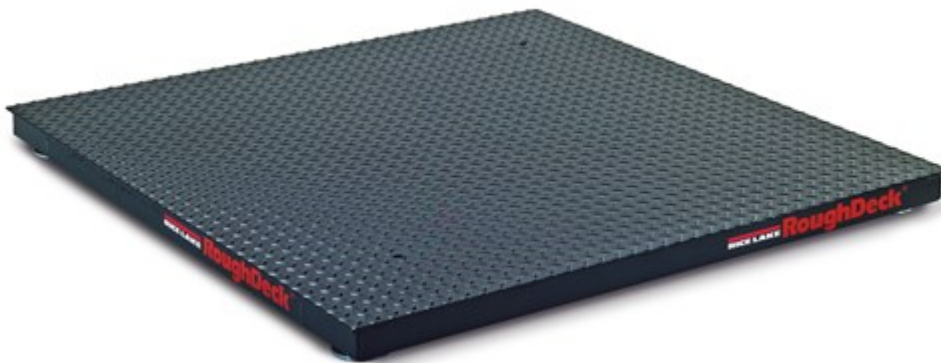


# RoughDeck® HP Floor Scale

**RICE LAKE®**  
WEIGHING SYSTEMS

*A partir de: lunes, febrero 3,  
2025*



## Características estándar

- Heavy-duty industrial design
- Structural steel channel frame
- Four NTEP Certified alloy steel, shear beam load cells
- 20 ft SURVIVOR® EL147HE hostile environment load cell cable
- Side-access junction box
- Rugged diamond deck safety treadplate
- 4 adjustable stainless steel SUREFOOT™ support feet
- 4 corner overload stops (Canadian versions only)
- Level bubble (Canadian versions only)

## Homologaciones



Measurement  
Canada  
Approved



WARNING:  
Cancer  
and  
Reproductive  
Harm  
California  
Proposition  
65

# The Toughest, Most Accurate Floor Scale Available

The RoughDeck HP’s best-in-class features are enhanced to deliver more reliability and higher performance than ever before. Available in 1,000- to 10,000-pound capacities, the RoughDeck HP is the industry leader for precision weighing in Legal for Trade applications.

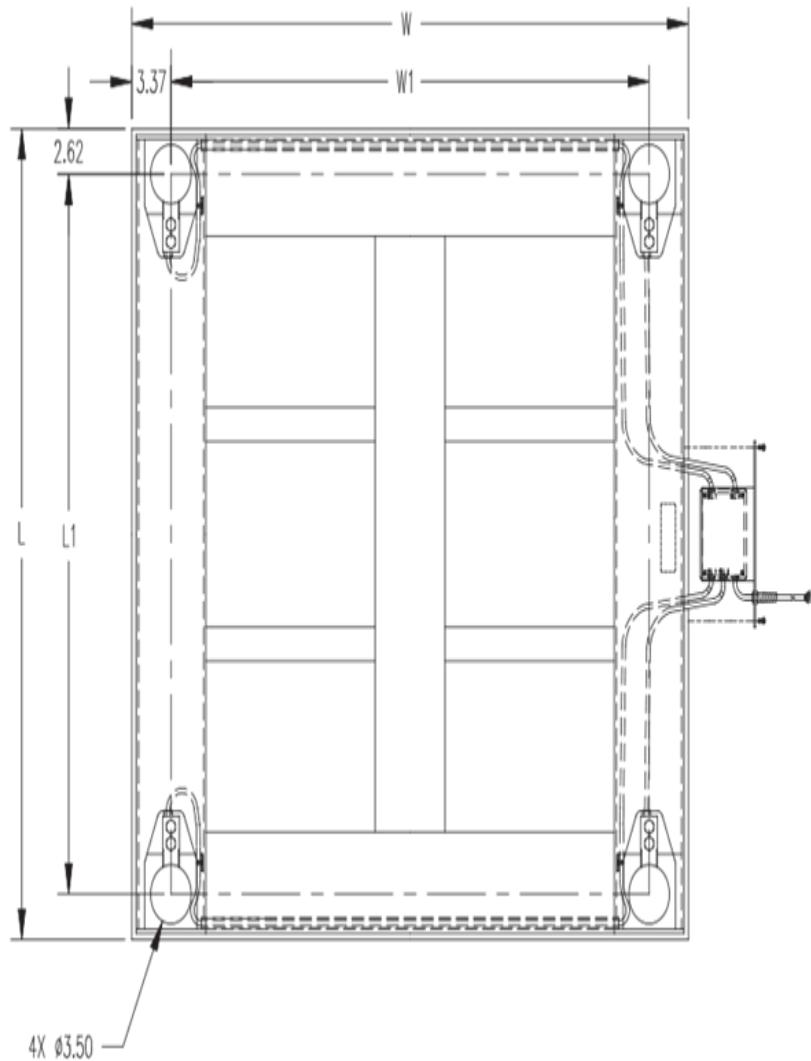
The RoughDeck HP’s NEMA Type 4X aluminum TuffSeal® junction box is protected from forks and industrial abuse by a six-inch structural steel channel frame and diamond treadplate safety deck. The junction box is also mounted as a handy slide-out tray that eases setup and service access. Cables include sturdy cord grips or a quick disconnect for added convenience. In addition, all load cell cables are enclosed in conduit, alleviating the danger of rough handling. Load cells are recessed within the channel for protection on all sides while maintaining easy access for leveling.

All Rice Lake floor scales, unless specified otherwise, are built with lifting holes to assist our dealers during installation or at later service the scales.

## RoughDeck HP Floor Scale Specifications

<b>End Load Capacity:</b> 200% full scale at 1,000 lb 100% full scale at 2,000 lb, and 5,000 lb 80% full scale at 10,000 lb	<b>Junction Box:</b> TuffSeal® JB4SS stainless steel, NEMA Type 4X junction box with signal trim card	<b>Warranty (limited):</b> Weldment: Five-year Load cells: Two-year All other components: One-year
<b>Cable Length:</b> 20 ft (6.1 m) for connecting junction box to indicator	<b>Welding:</b> Stitch	<b>Approvals:</b> NTEP CC 92-001, Class III 5,000d Measurement Canada AM-4827, Class III 5,000d
	<b>Threaded Eyebolt:</b> Hole (1/2-20 NF) located in center of deck for easy lifting	

# RoughDeck HP Floor Scale Dimensions



Dimensions				
Length	L1	W	W1	H
30.00 in	24.75 in	30.00 in	23.25 in	3.50 in
36.00 in	30.75 in	36.00 in	29.25 in	3.50 in
48.00 in	42.75 in	48.00 in	41.25 in	3.50 in
60.00 in	54.75 in	48.00 in	41.25 in	3.50 in
72.00 in	66.75 in	48.00 in	41.25 in	3.50 in
60.00 in	54.75 in	60.00 in	53.25 in	3.50 in
72.00 in	66.75 in	60.00 in	53.25 in	3.50 in
84.00	78.75 in	60.00 in	53.25 in	3.50 in
Note: 1 in = 25.4 mm				

## Códigos de productos

### Código Descripción

#### With Quick Connector

<b>66318</b>	Scale, Floor Roughdeck 2.5x2.5HP-2K 2-1/2ftx2-1/2x3-1/2 2000lb 20ft w/ Quick Connect NTEP III 5 Steel Painted
<b>66320</b>	Scale, Floor Roughdeck 3x3HP-1K 3ftx3ftx3-1/2 1000lb 20ft w/ Quick Connect NTEP III 5 Steel Painted
<b>66317</b>	Scale, Floor Roughdeck 3x3HP-2K 3ftx3ftx3-1/2 2000lb 20ft w/ Quick Connect NTEP III 5 Steel Painted
<b>105300</b>	Scale, Floor Roughdeck 3x3HP-5K 3ftx3ftx3-1/2 5000lb 20ft w/ Quick Connect NTEP III Steel Painted
<b>66319</b>	Scale, Floor Roughdeck 4x4HP-1K 4ftx4ftx3-1/2 1000lb 20ft w/ Quick Connect NTEP III 5 Steel Painted
<b>67618</b>	Scale, Floor Roughdeck 4x4HP-2K 4ft x 4ft x 3-1/2 2,000LB 20ft w/ Quick Connect NTEP III 5 Steel Painted
<b>66316</b>	Scale, Floor Roughdeck 4x4HP-5K 4ftx4ftx3-1/2 5,000lb 20ft w/ Quick Connect NTEP III 5 Steel Painted
<b>66315</b>	Scale, Floor Roughdeck 4x4HP-10K 4ftx4ftx3-1/2 10,000lb 20ft w/ Quick Connect NTEP III 5 Steel Painted
<b>66314</b>	Scale, Floor Roughdeck 4x5HP-5K 4ftx5ftx3-1/2 5,000lb 20ft w/ Quick Connect
<b>66313</b>	Scale, Floor Roughdeck 4x5HP-10K 4ftx5ftx3-1/2 10,000lb 20ft w/ Quick Connect NTEP III 5 Steel Painted
<b>66312</b>	Scale, Floor Roughdeck 4x6HP-5K 4ftx6ftx3-1/2 5,000lb 20ft w/ Quick Connect NTEP III 5 Steel Painted
<b>66311</b>	Scale, Floor Roughdeck 4x6HP-10K 4ftx6ftx3-1/2 10,000lb 20ft w/ Quick Connect NTEP III 5 Steel Painted
<b>66310</b>	Scale, Floor Roughdeck 5x5HP-5K 5ftx5ftx3-1/2 5,000lb 20ft w/ Quick Connect NTEP III 5 Steel Painted
<b>66309</b>	Scale, Floor Roughdeck 5x5HP-10K 5ftx5ftx3-1/2 10,000lb 20ft w/ Quick Connect NTEP III 5 Steel Painted
<b>66308</b>	Scale, Floor Roughdeck 5x6HP-5K 5ftx6ftx3-1/2 5,000lb 20ft w/ Quick Connect NTEP III 5 Steel Painted
<b>66307</b>	Scale, Floor Roughdeck 5x6HP-10K 5ftx6ftx3-1/2 10,000lb 20ft w/ Quick Connect NTEP III 5 Steel Painted
<b>66306</b>	Scale, Floor Roughdeck 5x7HP-5K 5ftx7ftx3-1/2 5000lb 20ft w/ Quick Connect NTEP III 5 Steel Painted
<b>66305</b>	Scale, Floor Roughdeck 5x7HP-10K 5ftx7ftx3-1/2 10,000lb 20ft w/ Quick Connect NTEP III 5 Steel Painted

#### Without Quick Connector

<b>67695</b>	Scale, Floor Roughdeck 2.5x2.5KHP-2K 2.5ftx2.5ftx3-1/2 2000lb w/o Quick Connect NTEP III 5 Steel Painted
<b>67693</b>	Scale, Floor Roughdeck 3x3HP-1K 3ftx3ftx3-1/2 1,000lb 20ft w/o Quick Connect NTEP III 5 Steel Painted.
<b>67696</b>	Scale, Floor Roughdeck 3x3HP-2K 3ftx3ftx3-1/2 2000lb 20ft w/o Quick Connect NTEP III 5 Steel Painted
<b>67697</b>	Scale, Floor Roughdeck 4x4HP-2K 4ftx4ftx3-1/2 2000lb 20ft w/o Quick Connect NTEP III 5 Steel Painted
<b>105301</b>	Scale, Floor Roughdeck 3x3HP-5K 3ftx3ftx3-1/2 5000lb 20ft w/o Quick Connect NTEP III Steel Painted
<b>67694</b>	Scale, Floor Roughdeck 4x4HP-1K 4ftx4ftx3-1/2 1000lb 20ft w/o Quick Connect NTEP III 5 Steel Painted

<b>Código</b>	<b>Descripción</b>
<b>67698</b>	Scale,Floor Roughdeck 4x4HP-5K 4ftx4ftx3-1/2 5,000lb 20ft w/o Quick Connect NTEP III 5 Steel Painted
<b>67699</b>	Scale,Floor Roughdeck 4x4HP-10K 4ftx4ftx3-1/2 10,000lb 20ft w/o Quick Connect NTEP III 5 Steel Painted
<b>67700</b>	Scale,Floor Roughdeck 4X5HP-5K 4ftx5ftx3-1/2 5,000lb 20ft w/o Quick Connect NTEP III 5 Steel Painted
<b>67701</b>	Scale,Floor Roughdeck 4x5HP-10K 4ftx5ftx3-1/2 10,000lb 20ft w/o Quick Connect NTEP III 5 Steel Painted
<b>67702</b>	Scale,Floor Roughdeck 4x6HP-5K 4ftx6ftx3-1/2 5000lb 20ft w/o Quick Connect NTEP III 5 Steel Painted
<b>67703</b>	Scale,Floor Roughdeck 4x6HP-10K 4ftx6ftx3-1/2 10,000lb 20ft w/o Quick Connect NTEP III 5 Steel Painted
<b>67704</b>	Scale,Floor Roughdeck 5x5HP-5K 5ftx5ftx3-1/2 5000lb 20ft w/o Quick Connect NTEP III 5 Steel Painted
<b>67705</b>	Scale,Floor Roughdeck 5x5HP-10K 5ftx5ftx3-1/2 10,000lb 20ft w/o Quick Connect NTEP III 5 Steel Painted
<b>67706</b>	Scale,Floor Roughdeck 5x6HP-5K 5ftx6ftx3-1/2 5,000lb 20ft w/o Quick Connect NTEP III 5 Steel Painted
<b>67707</b>	Scale,Floor Roughdeck 5x6HP-10K 5ftx6ftx3-1/2 10,000lb 20ft w/o Quick Connect NTEP III 5 Steel Painted
<b>67708</b>	Scale,Floor Roughdeck 5x7HP-5K 5ftx7ft-3-1/2 5,000lb 20ft w/o Quick Connect NTEP III 5 Steel Painted
<b>67709</b>	Scale,Floor Roughdeck 5x7HP-10K 5ftx7ftx3-1/2 10,000lb 20ft w/o Quick Connect NTEP III 5 Steel Painted

### **Canadian Weights and Measures Approved - With Quick Connector**

<b>191928</b>	Scale,Floor Roughdeck 2.5x2.5HC-1,000 2.5ftx2.5ft 1,000KG LMB Mild Steel Painted w/Quick Connect
<b>191949</b>	Scale,Floor Roughdeck 3x3HP-500 3ftx3ft 500KG LMB Mild Steel Painted w/ Quick Connect
<b>191931</b>	Scale,Floor Roughdeck 3x3HC-2,500 3ftx3ft 2,500KG LMB Mild Steel Painted w/ Quick Connect
<b>191951</b>	Scale,Floor Roughdeck 4x4HP-500 4ftx4ft 500KG LMB Mild Steel Painted w/ Quick Connect
<b>191933</b>	Scale,Floor Roughdeck 4x4HC-1,000 4ftx4ft 1,000KG LMB Mild Steel Painted w/ Quick Connect
<b>191935</b>	Scale,Floor Roughdeck 4x5HC-2,500 4ftx5ft 2,500KG LMB Mild Steel Painted w/ Quick Connect
<b>191937</b>	Scale,Floor Roughdeck 4x5HC-5,000 4ftx5ft 5,000KG LMB Mild Steel Painted w/ Quick Connect
<b>191939</b>	Scale,Floor Roughdeck 4x6HC-2,500 4ftx6ft 2,500KG LMB Mild Steel Painted w/ Quick Connect
<b>191941</b>	Scale,Floor Roughdeck 4x6HC-5,000 4ftx6ft 5,000KG LMB Mild Steel Painted w/ Quick Connect
<b>191943</b>	Scale,Floor Roughdeck 5x6HC-2,500 5ftx6ft 2,500KG LMB Mild Steel Painted w/ Quick Connect
<b>191945</b>	Scale,Floor Roughdeck 5x6HC-5,000 5ftx6ft 5,000KG LMB Mild Steel Painted w/ Quick Connect
<b>66464</b>	Scale,Floor Roughdeck 3x3HC-1,000 3ftx3ft 1,000KG LMB Mild Steel Painted w/ Quick Connect
<b>66465</b>	Scale,Floor Roughdeck 4x4HC-2,500 4ftx4ft 2,500KG LMB Mild Steel Painted w/ Quick Connect
<b>66466</b>	Scale,Floor Roughdeck 4x4HC-5,000 4ftx4ft 5,000KG LMB Mild Steel Painted w/ Quick Connect
<b>66467</b>	Scale,Floor Roughdeck 5x5HC-2,500 5ftx5ft 2,500KG LMB Mild Steel Painted w/ Quick Connect

Código	Descripción
<b>66468</b>	Scale,Floor Roughdeck 5x5HC-5,000 5ftx5ft 5,000KG LMB Mild Steel Painted w/ Quick Connect
<b>66469</b>	Scale,Floor Roughdeck 5x7HC-2,500 5ftx7ft 2,500KG LMB Mild Steel Painted w/ Quick Connect
<b>66470</b>	Scale,Floor Roughdeck 5x7HC-5,000 5ftx7ft 5,000KG LMB Mild Steel Painted w/ Quick Connect

### Canadian Weights and Measures Approved - Without Quick Connector

<b>191930</b>	Scale,Floor Roughdeck 2.5x2.5HC-1,000 2.5ftx2.5ft 1,000KG LMB Mild Steel Painted w/o Quick Connect
<b>191950</b>	Scale,Floor Roughdeck 3x3HP-500KG 3ftx3ftx3-1/2 500KG LMB Mild Steel Painted w/o Quick Connect
<b>191932</b>	Scale,Floor Roughdeck 3x3HC-2,500KG 3ftx3ftx3-1/2 2,500KG LMB Mild Steel Painted w/o Quick Connect
<b>191952</b>	Scale,Floor Roughdeck 4x4HP-500KG 4ftx4ftx3-1/2 500KG LMB Mild Steel Painted w/o Quick Connect
<b>191934</b>	Scale,Floor Roughdeck 4x4HC-1,000KG 4ftx4ftx3-1/2 1,000KG LMB Mild Steel Painted w/o Quick Connect
<b>191936</b>	Scale,Floor Roughdeck 4x5HC-2500KG 4ftx5ftx3-1/2 2,500KG LMB Mild Steel Painted w/o Quick Connect
<b>191938</b>	Scale,Floor Roughdeck 4x5HC-5,000KG 4ftx5ftx3-1/2 5,000KG LMB Mild Steel Painted w/o Quick Connect
<b>191940</b>	Scale,Floor Roughdeck 4x6HC-2500KG 4ftx6ftx3-1/2 2,500KG LMB Mild Steel Painted w/o Quick Connect
<b>191942</b>	Scale,Floor Roughdeck 4x6HC-5,000KG 4ftx6ftx3-1/2 5,000KG LMB Mild Steel Painted w/o Quick Connect
<b>191944</b>	Scale,Floor Roughdeck 5x6HC-2,500KG 5ftx6ftx3-1/2 2,500KG LMB Mild Steel Painted w/o Quick Connect
<b>191946</b>	Scale,Floor Roughdeck 5x6HC-5,000KG 5ftx6ftx3-1/2 5,000KG LMB Mild Steel Painted w/o Quick Connect
<b>67710</b>	Scale,Floor Roughdeck 3x3HC-1,000KG 3ftx3ftx3-1/2 1,000KG LMB Mild Steel Painted w/o Quick Connect
<b>67711</b>	Scale,Floor Roughdeck 4x4HC-2500KG 4ftx4ftx3-1/2 2,500KG LMB Mild Steel Painted w/o Quick Connect
<b>67712</b>	Scale,Floor Roughdeck 4x4HC-5,000KG 4ftx4ftx3-1/2 5,000KG LMB Mild Steel Painted w/o Quick Connect
<b>67713</b>	Scale,Floor Roughdeck 5x5HC-2,500KG 5ftx5ftx3-1/2 2,500KG LMB Mild Steel Painted w/o Quick Connect
<b>67714</b>	Scale,Floor Roughdeck 5x5HC-5,000KG 5ftx5ftx3-1/2 5,000KG LMB Mild Steel Painted w/o Quick Connect
<b>67715</b>	Scale,Floor Roughdeck 5x7HC-2,500KG 5ftx7ftx3-1/2 2,500KG LMB Mild Steel Painted w/o Quick Connect
<b>67716</b>	Scale,Floor Roughdeck 5x7HC-5,000KG 5ftx7ftx3-1/2 5,000KG LMB Mild Steel Painted w/o Quick Connect

## Opciones

Código	Descripción
<b>19352</b>	Floor Stand,Indicator Steel Painted (36.3in) For 120/120 Plus, 882IS/882IS Plus, 882IS/882IS Plus w/battery, 880/880Plus, 480/480 Plus, 482/482 Plus, 680 Synergy, 380/380X Synergy, 381 Synergy
<b>126384</b>	Floor Stand,Indicator Steel Painted (48in.) For 120/120 Plus, 882IS/882IS Plus, 882IS/882IS Plus w/battery, 880/880 Plus, 480/480 Plus, 482/482 Plus, 680 Synergy, 380/380X Synergy, 381 Synergy
<b>18777</b>	Mounting Plate Set, Roughdeck 1,000-10,000 lb Steel Painted
<b>Consult</b>	Access ramps, pit frames, bumper guards and portability frames available
<b>Consult</b>	Smooth deck instead of diamond safety tread plate
<b>Consult</b>	Four drilled deck holes for scale height adjustment
<b>Consult</b>	Epoxy paint
<b>Consult</b>	Mild steel deck with RL32018S IP66 stainless steel cFMus approved load cells and hardware
<b>Consult</b>	Mild steel deck with RL32218S-HE hermetically sealed IP69K stainless steel cFMus approved load cells and hardware
<b>Consult</b>	Top access junction box
<b>Consult</b>	Forklift channel option (up to 5 ft x 7 ft 10,000 lb, accommodates fork tines no larger than (WxH) 5 in x 2 in, fork entry is an opposite side of junction box location)

### Access Ramps

<b>69040</b>	Ramp,Roughdeck 2-1/2ft W x 3ft L x 3-1/2 1,000 - 10,000lb Steel Painted with side rails, diamond treadplate
<b>69041</b>	Ramp,Roughdeck 3ft W x 3ft L x 3-1/2 1,000 - 10,000lb Steel Painted with side rails, diamond treadplate
<b>69042</b>	Ramp,Roughdeck 4ft W x 3ft L x 3-1/2 1,000 - 10,000lb Steel Painted with side rails, diamond treadplate
<b>69043</b>	Ramp,Roughdeck 5ft W x 3ft L x 3-1/2 1,000 - 10,000lb Steel Painted with side rails, diamond treadplate
<b>69184</b>	Ramp,Roughdeck 2-1/2ftW x 4ftL x 3-1/2 1,000 - 10,000lb Steel Painted with side rails, diamond treadplate
<b>69185</b>	Ramp,Roughdeck 3ftW x 4ftL x 3-1/2 1,000 - 10,000lb Steel Painted with side rails, diamond treadplate
<b>69186</b>	Ramp,Roughdeck 4ftW x 4ftL x 3-1/2 1,000 - 10,000lb Steel Painted with side rails, diamond treadplate
<b>69187</b>	Ramp,Roughdeck 5ftW x 4ftL x 3-1/2 1,000 - 10,000lb Steel Painted with side rails, diamond treadplate

### Pit Frames

<b>18757</b>	Pit Frame,Roughdeck 2-1/2 ftx2-1/2ft 1,000-10,00 lb Steel Painted
<b>18759</b>	Pit Frame,Roughdeck 3ftx 3ft 1,000-10,000 lb Steel Painted
<b>18761</b>	Pit Frame,Roughdeck 4ftx 4ft 1,000-10,000 lb Steel Painted

Código	Descripción
<b>18763</b>	Pit Frame,Roughdeck 5ftx 5ft 1,000-10,000 lb Steel Painted
<b>18765</b>	Pit Frame,Roughdeck 4ftx 5ft 1,000-10,000 lb Steel Painted
<b>18767</b>	Pit Frame,Roughdeck 4ftx 6ft 1,000-10,000 lb Steel Painted
<b>18769</b>	Pit Frame,Roughdeck 5ftx 6ft 1,000-10,000 lb Steel Painted
<b>18771</b>	Pit Frame,Roughdeck 5ftx 7ft 1,000-10,000 lb Steel Painted

### Bumper Guards - Option A

<b>86815</b>	Bumper Guard, Roughdeck HP 2.5ft long, OPT A, 10K or smaller, 3x3x1/4, 5/8 diameter holes
<b>86816</b>	Bumper Guard, Roughdeck HP 3ft long, OPT A, 10K or smaller, 3x3x1/4, 5/8 diameter holes
<b>86817</b>	Bumper Guard, Roughdeck HP 4ft long, OPT A, 10K or smaller, 3x3x1/4, 5/8 diameter holes
<b>86818</b>	Bumper Guard, Roughdeck HP 5ft long, OPT A, 10K or smaller, 3x3x1/4, 5/8 diameter holes
<b>86819</b>	Bumper Guard, Roughdeck HP 6ft long, OPT A, 10K or smaller, 3x3x1/4, 5/8 diameter holes
<b>86820</b>	Bumper Guard, Roughdeck HP 7ft long, OPT A, 10K or smaller, 3x3x1/4, 5/8 diameter holes
<b>86821</b>	Bumper Guard, Roughdeck HP 8ft long, OPT A, 10K or smaller, 3x3x1/4, 5/8 diameter holes
<b>86822</b>	Bumper Guard, Roughdeck HP 9ft long, OPT A, 10K or smaller, 3x3x1/4, 5/8 diameter holes
<b>86823</b>	Bumper Guard, Roughdeck HP 10ft long, OPT A, 10K or smaller, 3x3x1/4, 5/8 diameter holes

### Bumper Guards - Option B

<b>86843</b>	Bumper Guard, Roughdeck HP 2.5ft long, OPT B, 10K or smaller, 3x3x1/4 Angle, 5/8 Diameter Holes
<b>86844</b>	Bumper Guard, Roughdeck HP 3ft long, OPT B, 10K or smaller, 3x3x1/4 Angle, 5/8 Diameter Holes
<b>86845</b>	Bumper Guard, Roughdeck HP 4ft long, OPT B, 10K or smaller, 3x3x1/4 Angle, 5/8 Diameter Holes
<b>86846</b>	Bumper Guard, Roughdeck HP 5ft long, OPT B, 10K or smaller, 3x3x1/4 Angle, 5/8 Diameter Holes
<b>86847</b>	Bumper Guard, Roughdeck HP 6ft long, OPT B, 10K or smaller, 3x3x1/4 Angle, 5/8 Diameter Holes
<b>86848</b>	Bumper Guard, Roughdeck HP 7ft long, OPT B, 10K or smaller, 3x3x1/4 Angle, 5/8 Diameter Holes
<b>86849</b>	Bumper Guard, Roughdeck HP 8ft long, OPT B, 10K or smaller, 3x3x1/4 Angle, 5/8 Diameter Holes
<b>86850</b>	Bumper Guard, Roughdeck HP 9ft long, OPT B, 10K or smaller, 3x3x1/4 Angle, 5/8 Diameter Holes
<b>86851</b>	Bumper Guard, Roughdeck HP 10ft long, OPT B, 10K or smaller, 3x3x1/4 Angle, 5/8 Diameter Holes

### Bumper Guards - Option C

<b>86870</b>	Bumper Guard, Roughdeck HP 2.5ft long, OPT C, 10K or smaller, 3x3x1/4 Angle, 5/8 Diameter Holes
<b>86871</b>	Bumper Guard, Roughdeck HP 3ft long, OPT C, 10K or smaller, 3x3x1/4 Angle, 5/8 Diameter Holes

Código	Descripción
86872	Bumper Guard, Roughdeck HP 4ft long, OPT C, 10K or smaller, 3x3x1/4 Angle, 5/8 Diameter Holes
86873	Bumper Guard, Roughdeck HP 5ft long, OPT C, 10K or smaller, 3x3x1/4 Angle, 5/8 Diameter Holes
86874	Bumper Guard, Roughdeck HP 6ft long, OPT C, 10K or smaller, 3x3x1/4 Angle, 5/8 Diameter Holes
86875	Bumper Guard, Roughdeck HP 7ft long, OPT C, 10K or smaller, 3x3x1/4 Angle, 5/8 Diameter Holes
86876	Bumper Guard, Roughdeck HP 8ft long, OPT C, 10K or smaller, 3x3x1/4 Angle, 5/8 Diameter Holes
86877	Bumper Guard, Roughdeck HP 9ft long, OPT C, 10K or smaller, 3x3x1/4 Angle, 5/8 Diameter Holes
86878	Bumper Guard, Roughdeck HP 10ft long, OPT C, 10K or smaller, 3x3x1/4 Angle, 5/8 Diameter Holes

**www.ricelake.com | 800-472-6703**

*An ISO 9001 Registered Company ©2024 Rice Lake Weighing Systems*